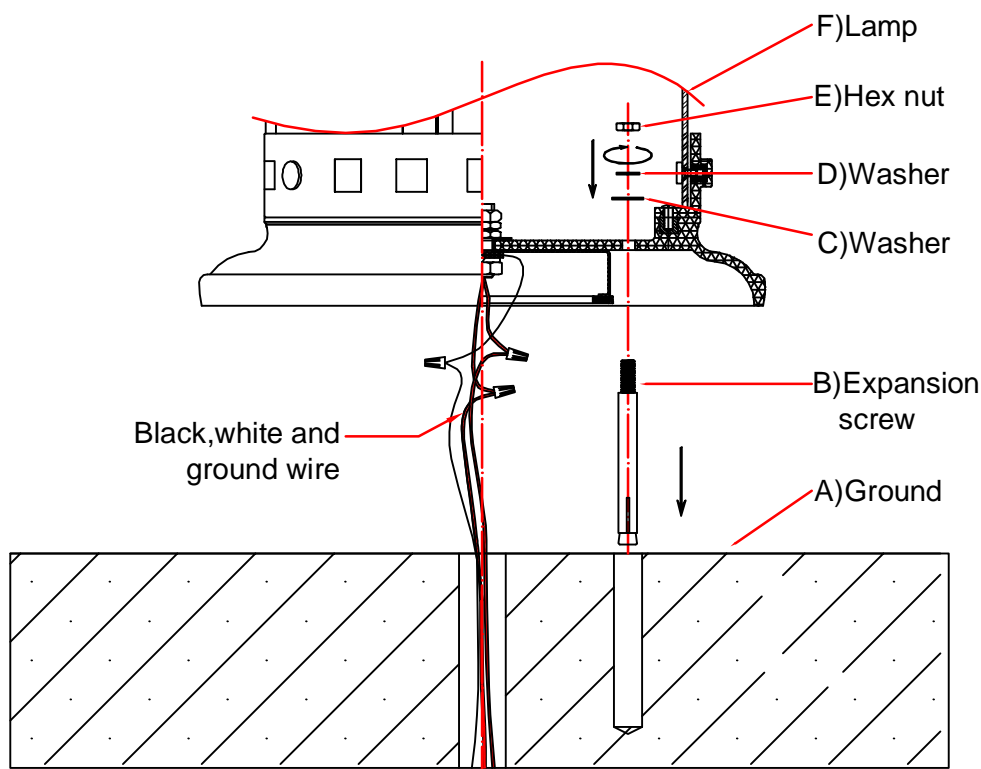


Please read the instructions carefully before installation of your Lighting Fixture. Referring to the drawing below, you have to determine the type of fixture which you have purchased "Single Strap Mounted" or "Swivel Strap Mounted" and proceed accordingly

Some types of fuses of must be unscrewed to shut off the power .

\* All wiring must be done in accordance with national and local electric codes.

\*\* If you do not have electrical wiring experience, Have your Lighting Fixture installed by a qualified licensed electrician.



## Installation Procedures

1. Switch off the power supply to the outlet box on which you plan to mount the lighting fixture (Caution: Disconnect all power before servicing)
2. Connect fixture wires to house wires. Ensure the right matching as black to black, white to white, ground to ground. (Caution: Make sure connections are secure, in Right Polarity and in Good Insulation)
3. B)Expansion screws to be installed onto A)Ground and then secured by C)Washer- D)Washer- E)Hex nut.